

# Managing Respiratory Protection Programs

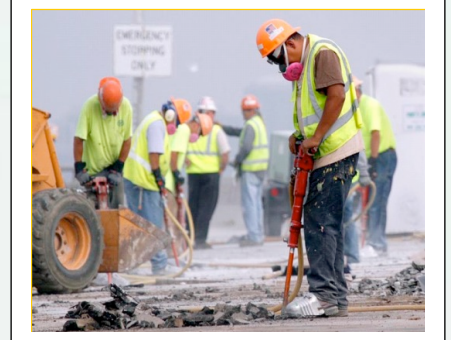
## The Respiratory Protection Program (RPP) Administrator

### The Employer's Responsibilities

#### Course Description:

The employer shall be responsible for the establishment and maintenance of a respiratory protection program, which shall include the requirements outlined in paragraph (c) of this section. The program shall cover each employee required by this section to use a respirator.

29 CFR 1910.134 (c) – 1910.134(c)(3) - The employer shall designate a program administrator who is qualified by appropriate training or experience that is commensurate with the complexity of the program to administer or oversee the respiratory protection program and conduct the required evaluations of program effectiveness..



1926.103 Respiratory protection. - The requirements applicable to construction work under this section are identical to those set forth at 29 CFR 1910.134 of this chapter. [ 63 FR 1297; Jan. 8, 1998]

Appendix A, 29 CFR 1910.134: Fit Testing Procedures (Mandatory), Part I. OSHA-Accepted Fit Test Protocols, A. Fit Testing Procedures -- General Requirements - The employer shall conduct fit testing using the following procedures. The requirements in this appendix apply to all OSHA-accepted fit test methods, both QLFT and QNFT.

This Respiratory Protection program seminar is designed for individuals who may design, develop, implement, administer and substane a respirator protection program. This course will help participants develop and maintain a respiratory protection program that complies with all state and federal regulations.

#### Course Objectives:

- Identify employer responsivity as it pertains to the OSHA respiratory Protection Standard
- Identify administrative components required for employers to establish a respiratory protection program in accordance with 29 CFR 1910.134(c).
- Apply state and federal standards to the new Silica and Lead construction standard.
- Identify the requirements for personal protective equipment in accordance with 1910.132.
- Evaluate multiple technologies to conduct qualitative and quantitative fit testing in accordance with 29 CFR 1910.134. entify how the Respiratory Protection Standard interacts with other OSHA standards in your respiratory protection program.
- Mandatory Requirements, Appendix A, B-1, C, D.
- Explain Respiratory Fit Testing requirements.
- Appendix D - Voluntary use of respirators



## Target Audience:

- Respiratory Protection Program (RPP) Administrators
- Private Sector Safety Officers – University Safety Officers
- Emergency Management - Emergency Medical Services
- Governmental Administrative, HAZMAT – Healthcare
- Public Health – Public Safety - Public Works

## Your Instructor: - Dennis Terpin - ASSP Hawaii Local Chapter Member



Dennis A. Terpin, PhD, O.H.S.T. Dr. Terpin is a member of the ASTM International Technical Committee F23.65/ANSI Z88, ANSI Z88.10 technical committees on Personal Protective Clothing and Respiratory Protection/Equipment, Senior Industrial Hygienist/Emergency Manager for the University of Illinois at Chicago. Dr. Terpin is a Certified Master Level Instructor for FEMA/Department of Homeland Security teaching at the Center for Domestic Preparedness (CDP) CORBRA live agent training center instructing in respiratory protection. Dennis has over 48 years of experience in the Occupational Safety and Health, Laboratory Safety and Emergency Management fields.

This summer Dr. Terpin presented Technical Session and Professional Development Sessions on Respiratory Protection at the National Conferences of the American Society of Safety Engineers (ASSE), The Campus Safety, Health, and Environmental Management Association (CSHEMA), College & University Hazardous Material Management Conference (CUHMMC) and The International Society for Respiratory Protection conferences.

Dr. Terpin has provided safety training to organizations such as the FEMA/DHS, Ford Motor Company (3 Counties), General Dynamics, United States Navy, United States Army, United States Air Force, Amoco, BP, Aloha Air cargo, Hawaii Electric, Commercial Roofing, Pauls Electrical, Lawson Safety, Pineridge Farms Inc, Abhe & Svoboda, Inc., Knig & Neel, Grace Pacific, Exxon, General Dynamics, Motorola, Google, GlaxoSmithKline, University of Hawaii, Kamehameha Schools, MIT, Georgetown University, Virginia Tech. University of Colorado- Anschutz Medical Campus, University of Tennessee Health Science Center, Penn State University, Saint Luke's College of Health Sciences, Virginia Commonwealth University, Kamehameha Schools, Georgia Institute of Technology, Kent State University Geauga Campus, University of Washington Tacoma Campus, Bemidji State University, Dartmouth College, National Institute of Standards and Technology, University of Central Florida, University of Illinois at Chicago, Northern Illinois University, University of Toronto Scarborough, Massachusetts Institute of Technology, Ecology Services, Inc., University of Hawaii, Whitman College, Brigham Young University, Loma Linda University, Texas A & M University - Corpus Christi, Université de Montréal, Oklahoma State, University of Houston-Downtown, Western Washington University, Washington State University Tri-Cities, Heritage University, Community Colleges of Spokane, Central Washington University, Seattle University, Columbia Basin College, University of Idaho, Washington State University, Eastern Washington University, Walla Walla University, The National Safety Council, OSHA Training Institute, and governmental agencies throughout the United States and 10 counties.

**Location: District Council 50, 2240 Young Street Honolulu, HI 96826**

**Date: November 27, 2018**

**Time: 8:00am to 3:30pm – Workbook, Lunch and breaks included**

**Cost: \$159.00 per person**

**Register at [Safety1Hawaii.com](http://Safety1Hawaii.com) -  
Information: Dennis Terpin – 630-699-7171, [Ua446@aol.com](mailto:Ua446@aol.com)**